



# Newhaven Provision - 2025 Newsletter

Welcome to the 2025 Newhaven Outreach newsletter

We are incredibly proud of everything Outreach students have achieved this year

## Overview of the year



Rebecca



Sharon



Owen



Laurence



Heather

This year we had some exciting changes—in December 2024 we increased from a team of 5 to a team of 8 and welcomed Rebecca as SENCO, Sharon as Transitions coordinator and Owen as a Mentor to the team.

Colette became the Outreach Pastoral Manager and Kerri became the Outreach Interventions Manager.



Colette



Kerri

We also welcomed some tropical fish to our team and Humbug a service dog in training.

Humbug has started her school therapy dog programme with PAWS. PAWS trains dogs to support students with emotional school based avoidance to enable schools to safely incorporate dogs to assist in providing essential wellbeing and learning support.



Dom



Humbug





# Outreach Principles

In addition to the three Newhaven values— **Trust, Restore** and **Achieve**, Newhaven Outreach is guided by three overarching principles:

## 1. **Student led curriculums developed around engagement, informed by student interest and aspirations.**

- Comprising of in person 1:1 and small group teaching from experienced and skilled Newhaven teachers to increase skills, knowledge and when applicable, gain qualifications
- online 1:1 and small group tutoring from qualified teachers to increase skills, knowledge and when applicable, gain qualifications
- Vocational 1:1 and group learning in areas of interest to increase skills, knowledge and when applicable, gain qualifications
- College link days in a range of vocational subjects
- Learning offered at home (if appropriate), in the community, at Pongo's Pad and at Newhaven Gardens, in response to student need

## 2. **Development of independent living skills**

- Using the Wheel of Independence as a platform, students are supported to increase their executive functioning in money skills, housekeeping, self-care, leisure, meal preparation, time management, laundry and food shopping.
- Developing social communication skills (verbal and/or non-verbal) including self-advocacy

## 3. **Development of a safe community and support network**

- Ensuring students and their families are effectively supported by a professional network, if required.
- Supporting students to develop a safe community (online or in-person) of likeminded peers with similar interests to support their wellbeing.





# Humbug

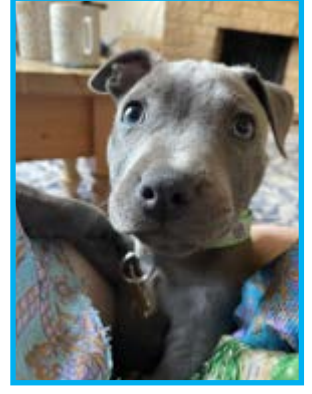
In May Dom collect-



ed a tiny bundle of wiggles, wags and energy in the form of an eight week old Smokey-grey Staffie puppy called Humbug.



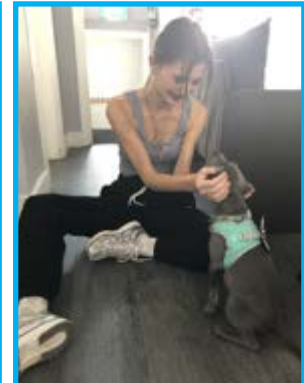
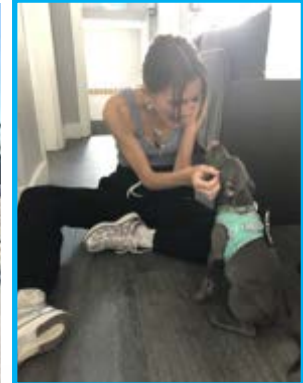
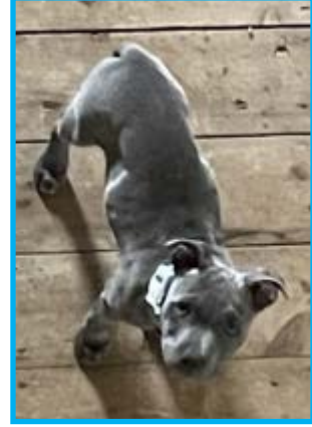
Humbug is Dom's family pet and was chosen especially for her loving and playful temperament so that she could be trained as a service animal.



Humbug was selected to take part in the training to enable her to become a qualified therapy dog. 87 applicants applied for one space, so Humbug was very lucky to be accepted onto the programme.

PAWS therapy dogs are trained to support students with emotional school based avoidance and anxiety.

Humbug started meeting students at 8 weeks old and loves nothing more than playing tug and fetch with students and being stroked and fussed by them.





# Pongo's Pad



In January 2025, the Outreach team started to set up our new community base in Charlton.

Named Pongo's Pad in honour of the fabulous street art opposite our main entrance, it is located in a house adjacent to

Fossdene Primary school at: **Pongo's Pad, Calydon Road, Charlton, SE7 7NQ.**



Pongo's is designed to provide a low demand, low arousal 'home from home' environment for students who feel ready to leave the house but are not yet ready for an 'in school' setting.

Pongo's has spaces for teaching, meetings and mentoring sessions, as well as a small outside area. Kindly furnished with community donations (and a lot of driving around South East London) the living room

at Pongo's is in use most days for 1:1 and small group teaching. The study is the perfect space for some of our students to work independently, meet with other professionals or to attend online lessons with external tutors.

Located a short walk from local cafes, coffee shops, restaurants and retail shops, students can also work on their independent living skills.



Study



Living room

We're looking forward to welcoming even more students to Pongo's in September.





# Newhaven Gardens, Room 17

In addition to our community house in Charlton, we also set up our own 'soft classroom' this year.

Based at Newhaven Gardens campus in Eltham, room 17 is set -up as a typical classroom with notice boards, a white board, classroom tables and chairs, but also provides an area to relax in with a fish tank, a sofa and some comfy chairs.

Students who are preparing to return to an 'in-school' placement can spend time having lessons in a typical busy school environment, but within the comfort of a safe and

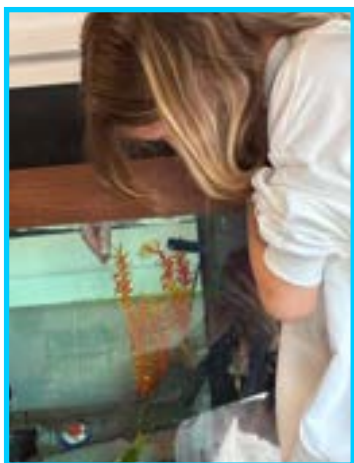
predictable classroom with familiar students and staff supporting them.

When students feel ready to leave room 17, they can be supported to enter the wider school to have break and lunch in the school canteen with other Newhaven students and staff. This helps to prepare students for who are moving on from Outreach and ready to commence their transition to an 'in-school' placement.

We developed this new graduated exposure pathway to support students to develop the skills and resilience to transition from at home support to in school learning.

For students on this pathway, they received systematic gradual exposure to new safe adults, sensory stimuli and low arousal environments whilst being offered accessible and meaningful educational opportunities through student led curriculums.

Whilst meaningful engagement and supporting student wellbeing is prioritised over an outright focus on achievement and attainment, we continue to be highly aspirational for Outreach students.





# Academic successes

Academically students have worked incredibly hard and have achieved great things.

This year Outreach students have:

- taken GCSEs in English Language, English Literature, Maths, History and Art
- completed an FPQ (Foundation Project Qualification)
- obtained Entry Level qualifications in English
- obtained Entry Level qualifications in Maths
- worked towards Gateway qualifications in Applied Science
- completed units towards a LASER qualification
- Attended 1:1 and in person small group online tuition in English Language, English Literature, Maths, History, Coding and Digital Media and graphics
- Attended 1:1 and in person small group lessons in English Language, English Literature, Maths, History, Science, LASER qualification, FPQ, Art, Literacy interventions and Numeracy interventions with Outreach teachers



# Vocational successes



Students have also excelled with developing their vocational skills.

This year Outreach students have:

- attended Shooters Hill College to develop practical and theoretical skills for the construction sector
- attended Flower Skills to develop practical and theoretical skills for the construction sector
- attended HB Academy to develop practical and theoretical skills for the hair and beauty sector
- developed vital self-employment skills, such as invoicing and budgeting, to support an already well established business as a gardener
- attended a 1:1 DJing intervention to learn the art of mixing, writing music and laying down tracks
- completed regular work experience as a lift engineer, gaining invaluable 'on the job' skills and knowledge suited for working in a professional environment.



# Independent living skills

Developing student's Independently living skills is just as integral to their curriculum offer as the development of their academic and/or vocational skills.

Over the course of the year 88.5% of Outreach students engaged with our Independent Living Skills curriculum, predominantly using the Wheel of Independence platform.

Students have:

- Learnt travel training skills
- Developed their Functional communication skills
- Developed their social communication skills
- Embedded budgeting and money management skills
- Taken themselves, staff, parents, guardians, siblings and friends and partner shopping to practice their newly acquired skills
- Enhanced their food prep and cooking skills
- Developed stress management strategies
- Improved their self-advocacy skills
- Practiced their executive functioning skills
- Worked hard to forge relationships with members of their community, both online and in person
- Enhanced their time management, self-care and housekeeping skills





# Trip—London Aquarium

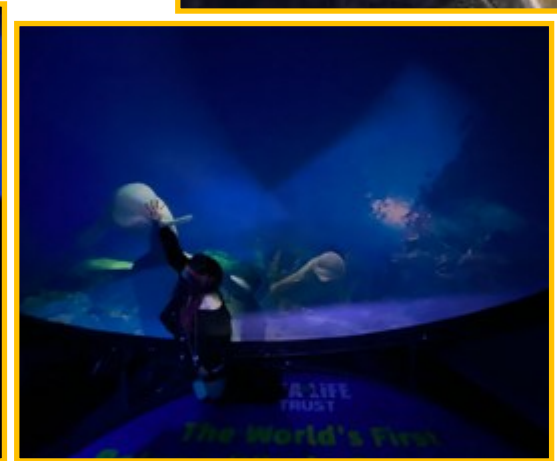
Outreach students visited the

London Aquarium, Sealife Centre with other Newhaven students as part of a whole school trip.

Whilst there they enjoyed the exhibits where they saw Sharks, Octopus, Stingray, Penguins, Turtles, Jellyfish, Sea-horses, Starfish, exotic and native fish.



Photos taken by Lou

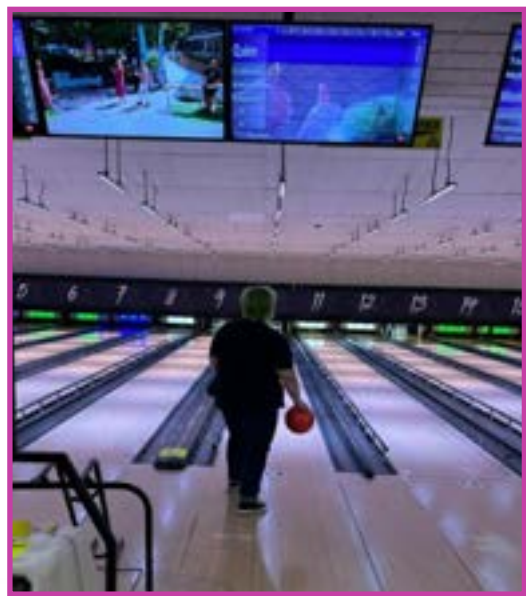




# Trip—bowling

Students were invited to showcase their bowling skills against an elite staff team of (almost) semi-professional bowlers!

Plenty of pins were knocked down, some strikes were achieved and lots of fun was had by all.





# Sports day

Newhaven Outreach students were invited to attend a whole school sports day with other students from Newhaven Gardens, Newhaven AC, Newhaven NEST and Newhaven Kings Park.



Despite being small, we are mighty and won several medals. Well done team Outreach!





# Transitions and new beginnings

The Newhaven Outreach students are a talented and skilled bunch; this year we have had 13 students move on to the following pathways:

- Study motorbike mechanics at Archways
- Newhaven Kings Park sixth form
- Newhaven NEST
- LSEC Holly hill college to study electrical installation
- LSEC Erith college to study fine Art
- The John Roan school
- Shooters Hill College to study Childcare
- Shooters Hill College to study Criminology
- Riverston school
- Considering lift engineering apprenticeship

Additionally, several students have applied to NEST, Kings Park and InToto Education and are waiting to hear back from the panels regarding placements.

We are extremely proud of all they have achieved whilst being supported by Newhaven. For those of you who are leaving us - we wish you the best of luck in your future. Not much makes us happier than when we hear from old students, so feel free to email Dom updates on occasion to be shared with the team.





# The summer



## 2024 Newhaven Outreach Summer Challenge...



You have six weeks off for the summer holiday – the perfect opportunity to try the Newhaven summer challenge!

For each activity you complete, you get a point - points mean prizes in September!





- Complete 1 – 5 tasks: Packet of sweets/chocolate bar of your choice
- Complete 6 – 10 tasks: Greggs sausage roll or donut of your choice
- Complete 11 – 15 tasks: £5 gift voucher
- Complete 16 – 20 tasks: £10 gift voucher
- Complete 21 – 25 tasks: £15 gift voucher
- Complete 26 – 30 tasks: £20 gift voucher
- Complete 31 – 35 tasks: £25 gift voucher
- Complete 36 – 40 tasks: £25 gift voucher and McDonalds breakfast/lunch



All Outreach students have been sent the Newhaven Summer challenge, where they are challenged to complete as many of the tasks as they can over their six week holiday.

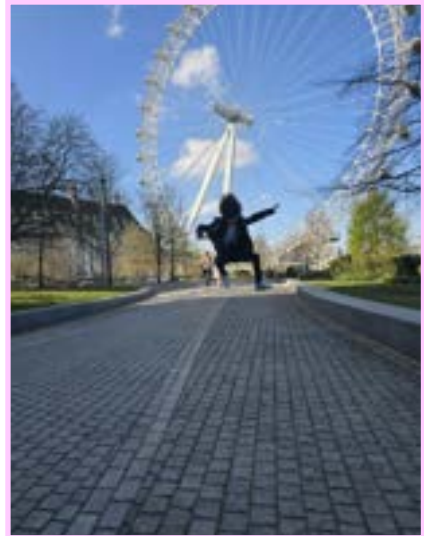
For students returning in September, don't forget to complete and return the form, as points mean prizes!

**The Newhaven Outreach team wishes you all a happy, healthy and safe summer holiday.**





Thank you



Thank you to the Newhaven Outreach students, their families/ carers, professionals supporting them and Newhaven Outreach staff team for another wonderful academic year.

